



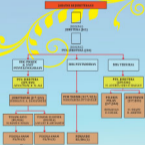
A-PDF M

Jabatan
KEJURUTERAAN





CARA ORGANISASI JARINGAN KEPERAWATAN





Transferable Credit (TCC) Courses (2013-2014)

Course #	Course Name	Level	Transferable to	Transferable to	Transferable to	Transferable to	Transferable to
1	Advanced Algebra I/Algebra II/Pre-Calculus	Math	121-123	121-123	121-123	121-123	121-123
2	Advanced Geometry/Trigonometry/Pre-Calculus	Math	124-126	124-126	124-126	124-126	124-126
3	Advanced Calculus I/Calculus II/Calculus III	Math	127-129	127-129	127-129	127-129	127-129
4	Advanced Statistics I/Statistics II/Statistics III	Math	130-132	130-132	130-132	130-132	130-132
5	Advanced Computer Science I/Computer Science II/Computer Science III	Math	133-135	133-135	133-135	133-135	133-135
6	Advanced English I/English II/English III	English	141-143	141-143	141-143	141-143	141-143
7	Advanced History I/History II/History III	History	151-153	151-153	151-153	151-153	151-153
8	Advanced Science I/Science II/Science III	Science	161-163	161-163	161-163	161-163	161-163
9	Advanced Foreign Language I/Foreign Language II/Foreign Language III	Foreign Language	171-173	171-173	171-173	171-173	171-173
10	Advanced Art I/Art II/Art III	Art	181-183	181-183	181-183	181-183	181-183
11	Advanced Music I/Music II/Music III	Music	191-193	191-193	191-193	191-193	191-193
12	Advanced Physical Education I/Physical Education II/Physical Education III	Physical Education	201-203	201-203	201-203	201-203	201-203
13	Advanced Health Education I/Health Education II/Health Education III	Health Education	211-213	211-213	211-213	211-213	211-213
14	Advanced Career Education I/Career Education II/Career Education III	Career Education	221-223	221-223	221-223	221-223	221-223



#	Activity	TYPE	START DATE	END DATE	IMPACT DATE	IMPACT VALUE	IMPACT TYPE	IMPACT UNIT
1	Residential Spring & Fall Site Office (on-campus)	Site	03/07/11	03/03/12	03/07/11	\$1,000	Support Fee	One Semester
2	Residential Site Office (on-campus)	Site	03/07/11	03/03/12	03/07/11	\$1,000	Office Supplies	One Semester
3	Residential Spring Student Support Fee (on-campus)	Site	03/07/11	03/03/12	03/07/11	\$1,000	Site Office Supplies	One Semester
4	Residential Spring Faculty Site Support (on-campus)	Site	03/07/11	03/03/12	03/07/11	\$1,000	Faculty Support	One Semester
5	Residential Spring Faculty Site Support (on-campus)	Site	03/07/11	03/03/12	03/07/11	\$1,000	Faculty Support	One Semester
6	Residential Spring Student Support Fee (on-campus)	Site	03/07/11	03/03/12	03/07/11	\$1,000	Site Office Supplies	One Semester
7	Residential Spring Faculty Site Support (on-campus)	Site	03/07/11	03/03/12	03/07/11	\$1,000	Faculty Support	One Semester
8	Residential Spring Faculty Site Support (on-campus)	Site	03/07/11	03/03/12	03/07/11	\$1,000	Faculty Support	One Semester
9	Residential Spring Student Support Fee (on-campus)	Site	03/07/11	03/03/12	03/07/11	\$1,000	Site Office Supplies	One Semester
10	Residential Spring Student Support Fee (on-campus)	Site	03/07/11	03/03/12	03/07/11	\$1,000	Site Office Supplies	One Semester
11	Residential Spring Student Support Fee (on-campus)	Site	03/07/11	03/03/12	03/07/11	\$1,000	Site Office Supplies	One Semester
12	Residential Spring Student Support Fee (on-campus)	Site	03/07/11	03/03/12	03/07/11	\$1,000	Site Office Supplies	One Semester
13	Residential Spring Student Support Fee (on-campus)	Site	03/07/11	03/03/12	03/07/11	\$1,000	Site Office Supplies	One Semester
14	Residential Spring Student Support Fee (on-campus)	Site	03/07/11	03/03/12	03/07/11	\$1,000	Site Office Supplies	One Semester
15	Residential Spring Student Support Fee (on-campus)	Site	03/07/11	03/03/12	03/07/11	\$1,000	Site Office Supplies	One Semester
16	Residential Spring Student Support Fee (on-campus)	Site	03/07/11	03/03/12	03/07/11	\$1,000	Site Office Supplies	One Semester
17	Residential Spring Student Support Fee (on-campus)	Site	03/07/11	03/03/12	03/07/11	\$1,000	Site Office Supplies	One Semester
18	Residential Spring Student Support Fee (on-campus)	Site	03/07/11	03/03/12	03/07/11	\$1,000	Site Office Supplies	One Semester
19	Residential Spring Student Support Fee (on-campus)	Site	03/07/11	03/03/12	03/07/11	\$1,000	Site Office Supplies	One Semester
20	Residential Spring Student Support Fee (on-campus)	Site	03/07/11	03/03/12	03/07/11	\$1,000	Site Office Supplies	One Semester



WORKING FUNDING ITEMS (FOR IMPLEMENTATION PERIOD OF 2017)

NO.	DESCRIPTION	UNIT	EST. QUANTITY	EST. UNIT PRICE	EST. TOTAL PRICE	CONTRACT	STATUS
1	Material survey related to improvement of road (about 200m)	km	0001.0	0.0000	0.0000	Open Work Contract	Exp/Completed
2	Material Survey (about 1km) (about 1km)	km	0001.0	0.0000	0.0000	Open Work Contract	Exp/Completed
3	Material survey related to bridge (about 100m) (about 100m)	km	0001.0	0.0000	0.0000	Open Contract	Exp/Completed
4	Investigation and design of bridge (about 100m) (about 100m)	km	0001.0	0.0000	0.0000	Open Work Contract	Exp/Completed
5	Material Survey related to bridge (about 100m) (about 100m)	km	0001.0	0.0000	0.0000	Open Work Contract	Exp/Completed
6	Material Survey related to bridge (about 100m) (about 100m)	km	0001.0	0.0000	0.0000	Open Work Contract	Exp/Completed
7	Material Survey related to bridge (about 100m) (about 100m)	km	0001.0	0.0000	0.0000	Open Contract	Exp/Completed
8	Material Survey related to bridge (about 100m) (about 100m)	km	0001.0	0.0000	0.0000	Open Contract	Exp/Completed
9	Material Survey related to bridge (about 100m) (about 100m)	km	0001.0	0.0000	0.0000	Open Contract	Exp/Completed
10	Material Survey related to bridge (about 100m) (about 100m)	km	0001.0	0.0000	0.0000	Open Contract	Exp/Completed
11	Material Survey related to bridge (about 100m) (about 100m)	km	0001.0	0.0000	0.0000	Open Contract	Exp/Completed
12	Material Survey related to bridge (about 100m) (about 100m)	km	0001.0	0.0000	0.0000	Open Contract	Exp/Completed



EXPENSE SUMMARY (EXPENSES BY LINE)

LINE	DESCRIPTION	UNIT	FY 2023	FY 2024	CHG	CLASS	STATUS
1	Administrative Support (Includes: Support Staff Salaries, Health Insurance, Retirement, Pension, Professional Fees)	Sec	20,000.00	20,000.00	0.00.00	Salary Expense	Unchanged
2	Administrative Support (Includes: Office Supplies, Printing, Postage, Travel)	Sec	10,000.00	10,000.00	0.00.00	Other Expense	Unchanged
3	Administrative Support (Includes: Office Rent, Utilities, Insurance)	Sec	10,000.00	10,000.00	0.00.00	Op. Expense	Unchanged
4	Administrative Support (Includes: Office Supplies, Printing, Postage, Travel)	Sec	10,000.00	10,000.00	0.00.00	Other Expense	Unchanged

